

MAYFAIR GOLD



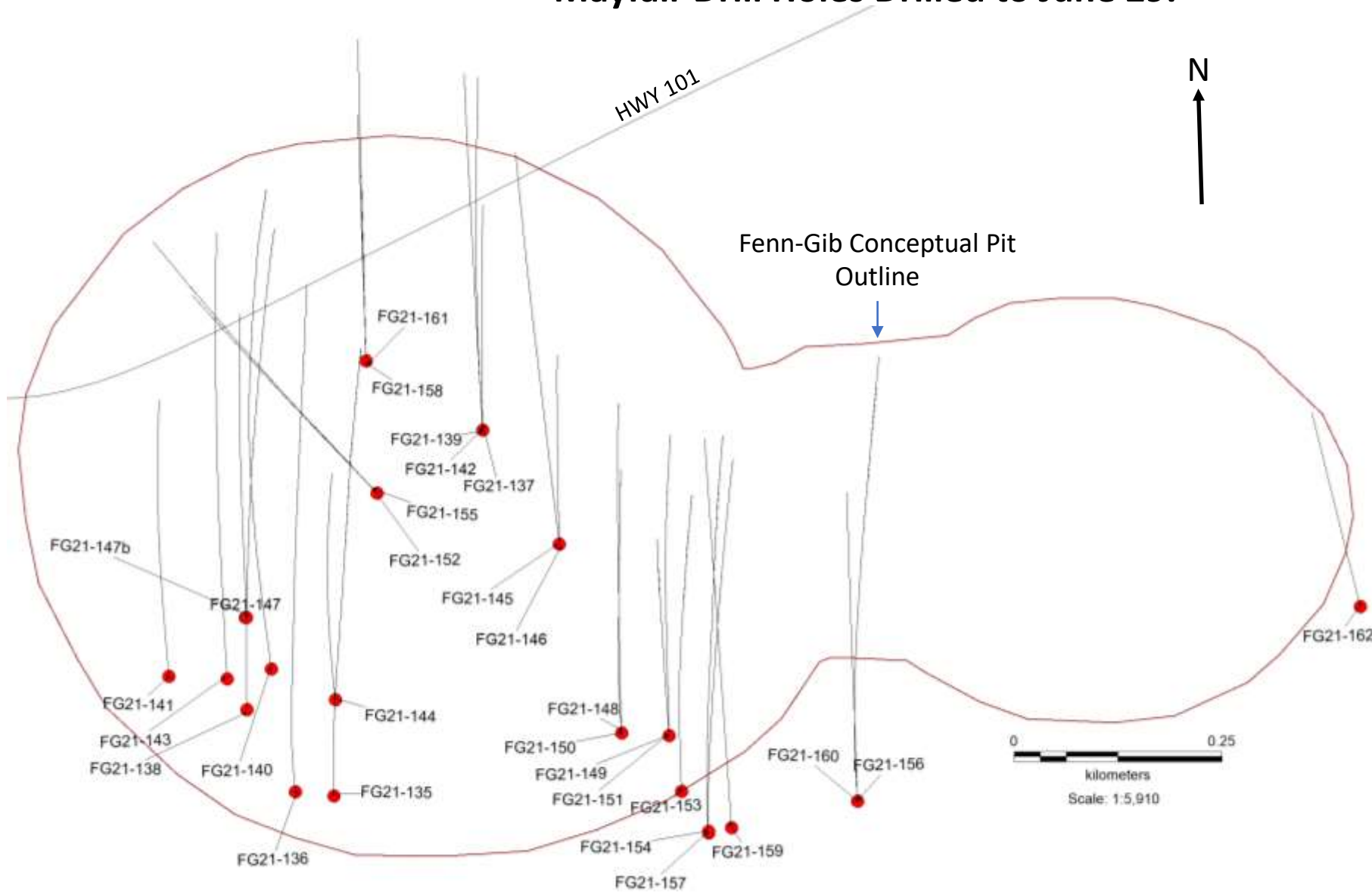
FENN-GIB DRILL PLAN MAP AND SECTIONS FOR JUNE 29, 2021 PRESS RELEASE.

DRILL SECTION: HOLES FG-21-141,142, 144, 145 AND 155

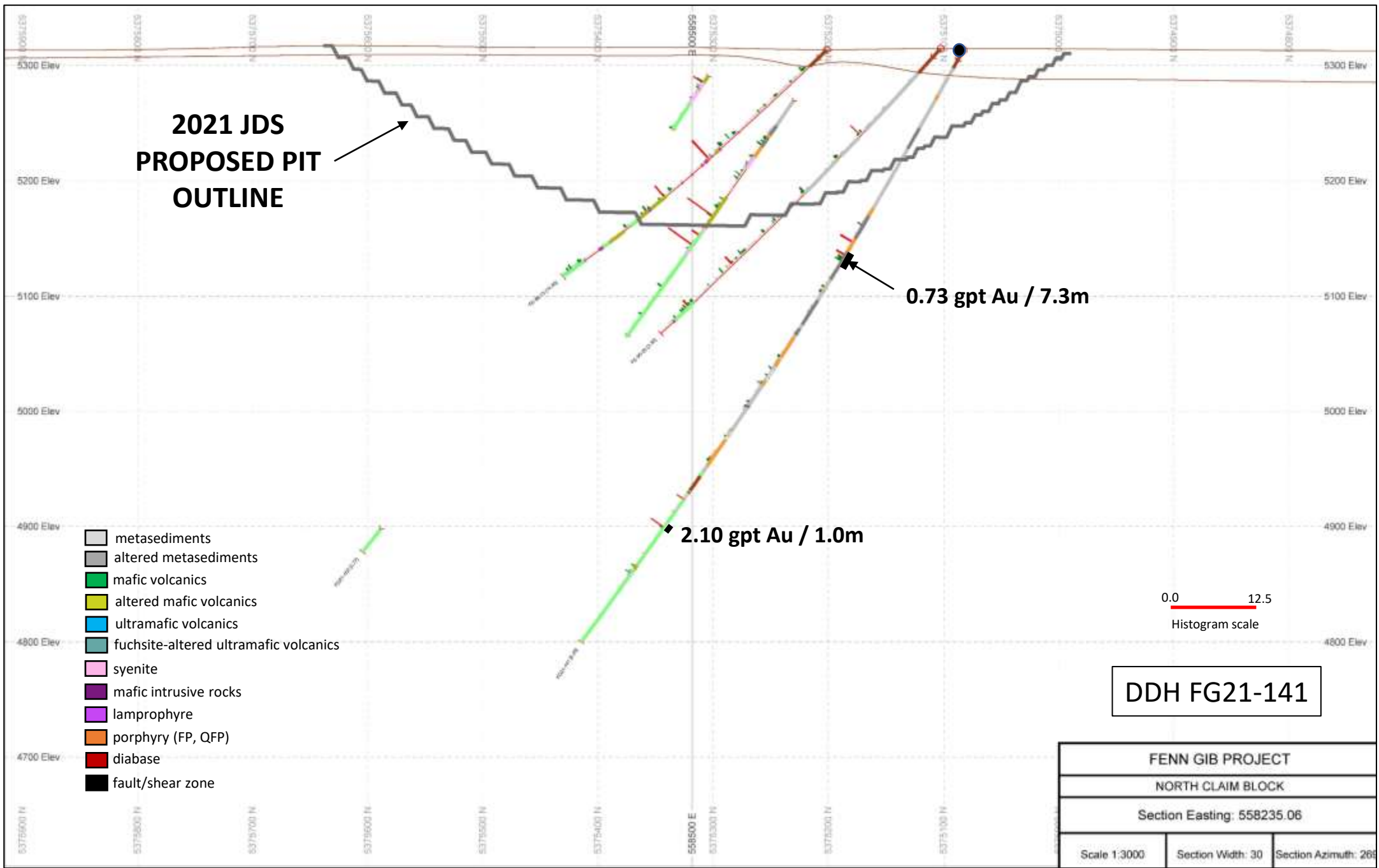
INCLUDING FOOTWALL ZONE AREA HISTORICAL TRENCH MAP AND PICTURES, AND HOLES FG21-158 AND 161 VISIBLE GOLD PICTURES

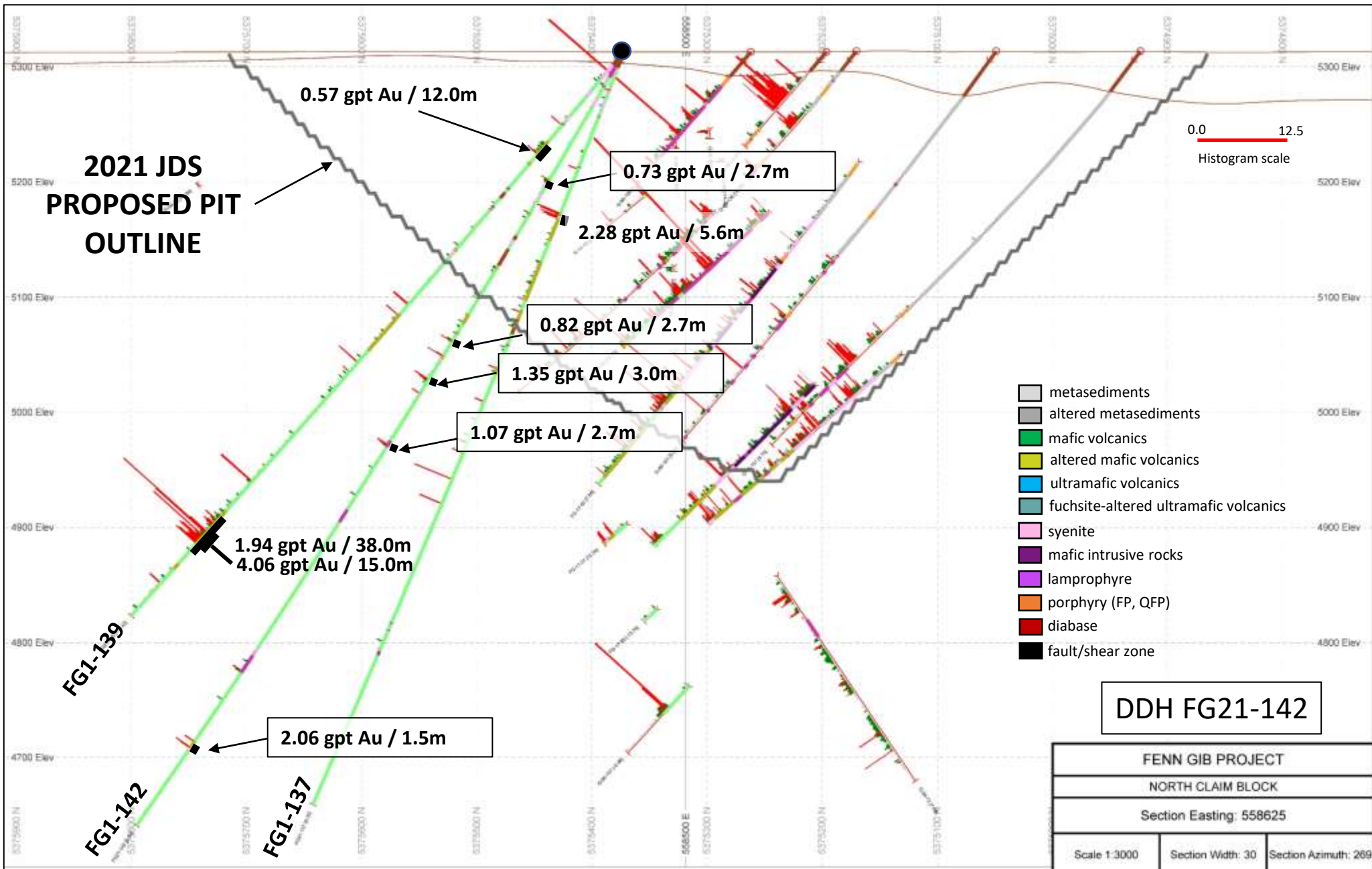
June 29, 2021

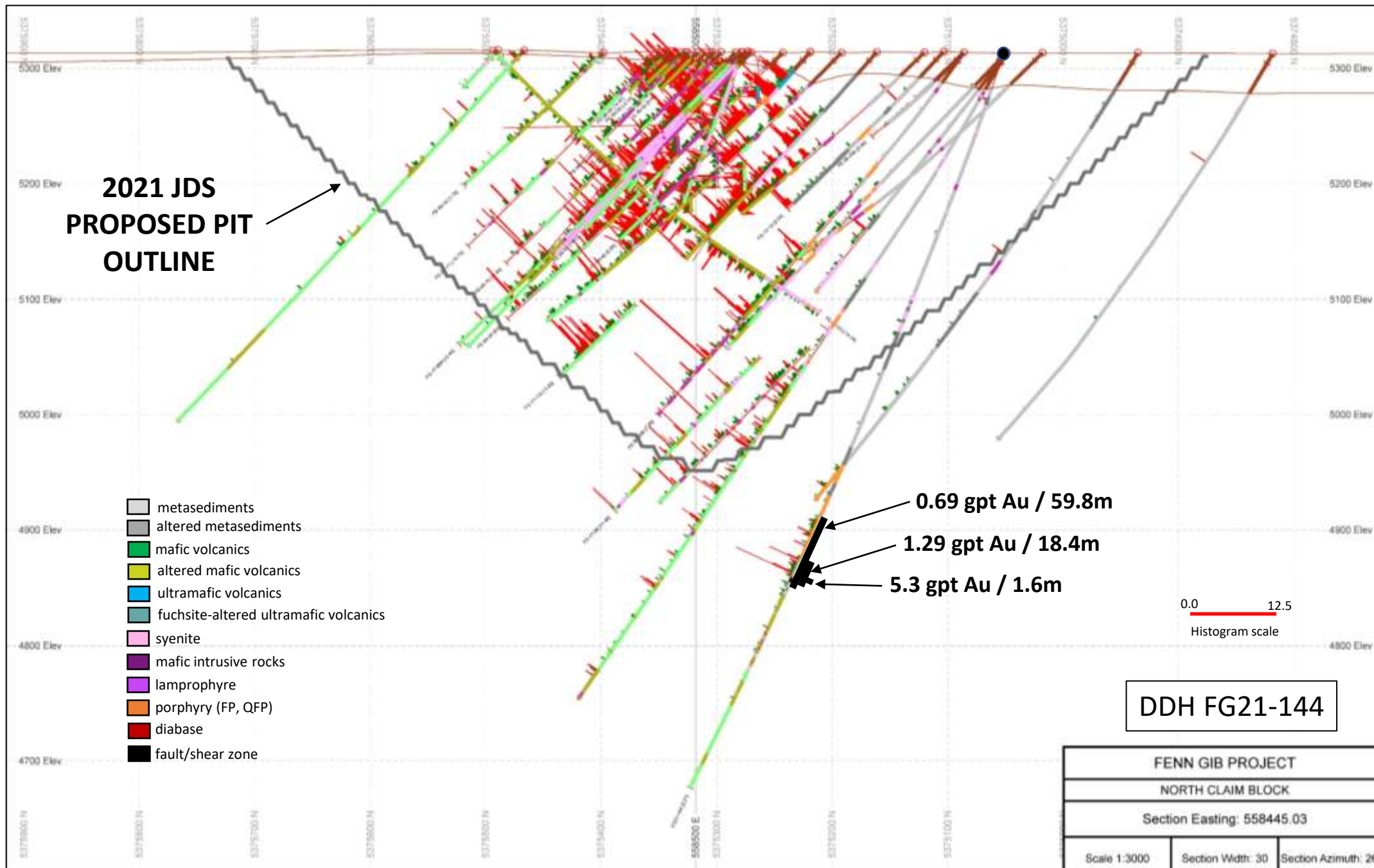
Fenn-Gib Deposit Plan Map Showing Location of 2021 Mayfair Drill Holes Drilled to June 29.

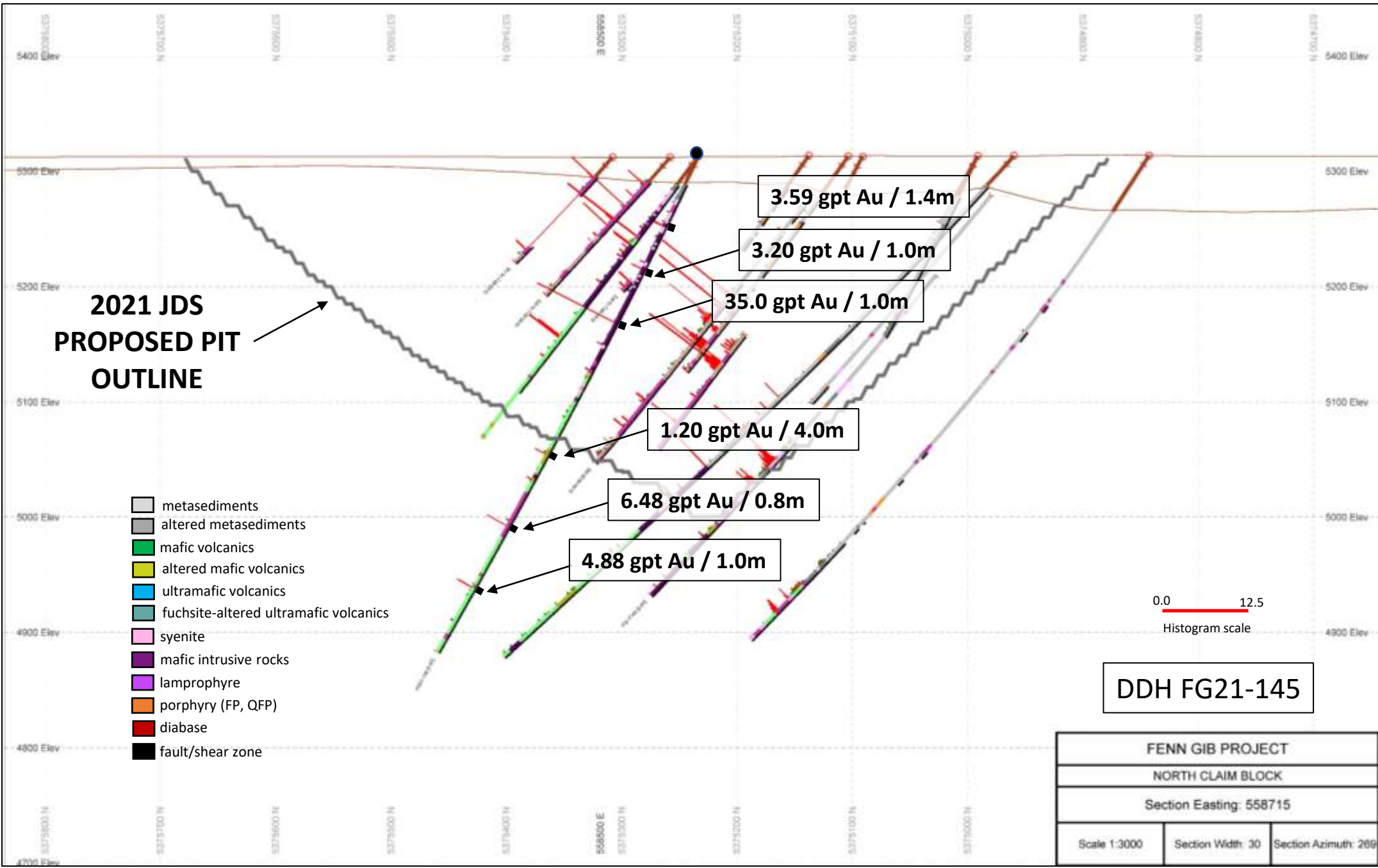


Hole-ID	Status
FG21-135	Assays reported June 1 Press Release
FG21-136	Assays reported June 1 Press Release
FG21-137	Assays reported June 1 Press Release
FG21-138	Assays reported June 1 Press Release
FG21-139	Assays reported June 1 Press Release
FG21-140	Assays reported June 1 Press Release
FG21-141	Assays reported June 29 Press Release
FG21-142	Assays reported June 29 Press Release
FG21-143	Assays Pending
FG21-144	Assays reported June 29 Press Release
FG21-145	Assays reported June 29 Press Release
FG21-146	Assays Pending
FG21-147	Assays Pending
FG21-147b	Assays Pending
FG21-148	Assays Pending
FG21-149	Assays Pending
FG21-150	Assays Pending
FG21-151	Assays Pending
FG21-152	Assays Pending
FG21-153	Assays Pending
FG21-154	Assays Pending
FG21-155	Partial assays reported June 29 Press Release
FG21-156	Assays Pending
FG21-157	Assays Pending
FG21-158	Assays Pending
FG21-159	Drill Hole in Progress
FG21-160	Drill Hole in Progress
FG21-161	Drill Hole in Progress
FG21-162	Drill Hole in Progress









**2021 JDS
PROPOSED PIT
OUTLINE**

- metasediments
- altered metasediments
- mafic volcanics
- altered mafic volcanics
- ultramafic volcanics
- fuchsite-altered ultramafic volcanics
- syenite
- mafic intrusive rocks
- lamprophyre
- porphyry (FP, QFP)
- diabase
- fault/shear zone

3.59 gpt Au / 1.4m

3.20 gpt Au / 1.0m

35.0 gpt Au / 1.0m

1.20 gpt Au / 4.0m

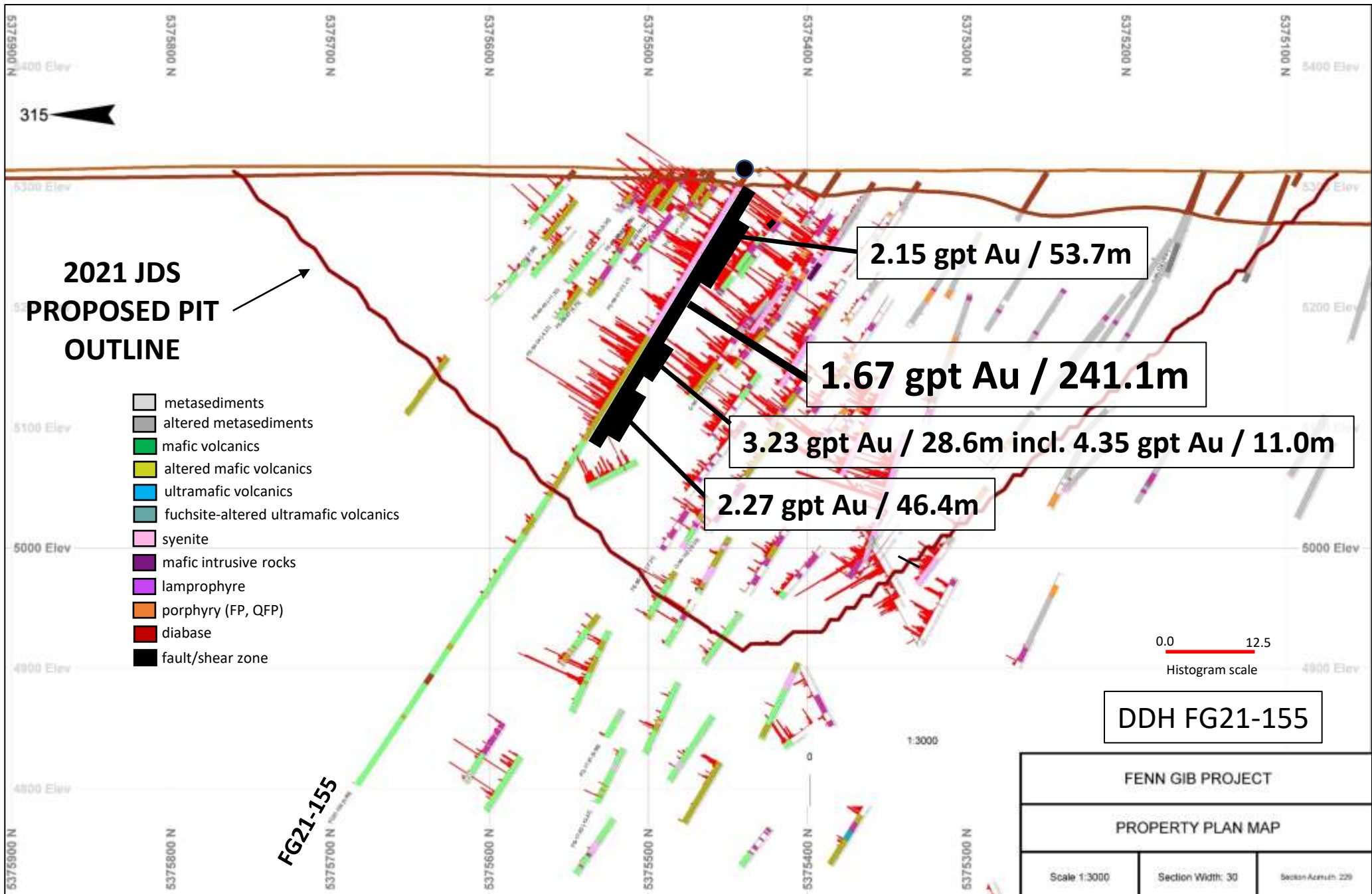
6.48 gpt Au / 0.8m

4.88 gpt Au / 1.0m

0.0 12.5
Histogram scale

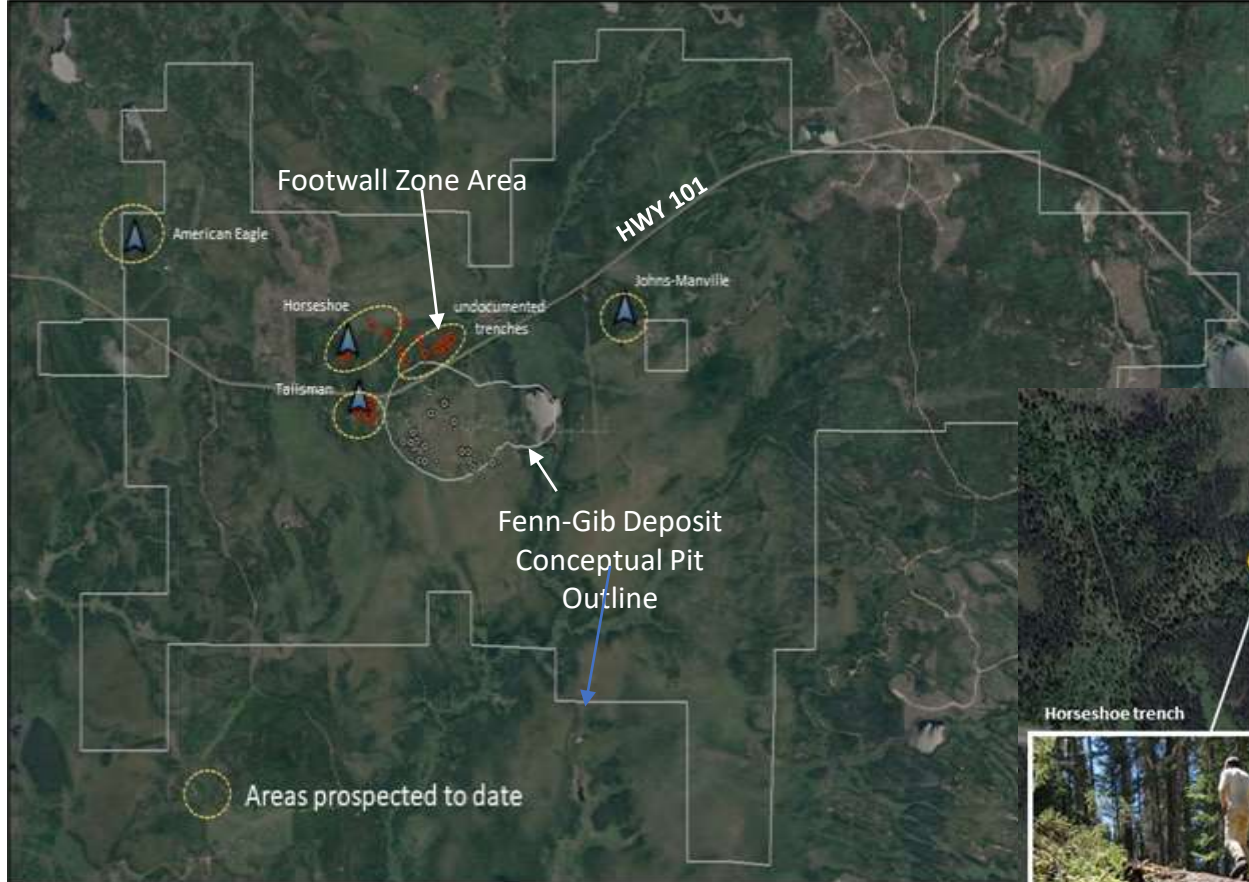
DDH FG21-145

FENN GIB PROJECT		
NORTH CLAIM BLOCK		
Section Easting: 558715		
Scale 1:3000	Section Width: 30	Section Azimuth: 269



Mayfair North Block: Areas Prospected to June 29

Prospecting on the property is continuing with areas covered including the discovery of undocumented trenches where the Footwall Zone is expected to outcrop located to the north of the Fenn-Gib deposit. Prospecting also included the Johns Mansville Occurrence, Horseshoe Occurrence, Talisman Shaft area and American Eagle shaft area. A total of 88 samples have been submitted to the lab for analysis.



Visible gold (VG) noted during core logging in hole FG21-158 at 411.9m and hole FG21-161 at 178.5m and 179.6m drilled on the same section and above hole FG21-158 within the Footwall stratigraphy north of the Fenn-Gib deposit. (Assays Pending).



Hole FG21-161 (177.0-179.0m): Photo shows 2 areas of visible gold flecks hosted in brecciated albite-epidote-carbonate altered pillowed mafic volcanic with 3% to 5% fine disseminated pyrite in the breccia matrix. Assays pending.



Hole FG21-158: Photo showing a visible fleck of gold at 411.9m. Assays pending.